



Government of West Bengal  
School Education Department  
Mid Day Meal Section  
ACHARYA PRAFULLA CHANDRA BHAVAN  
Plot 7/1, Block- DK, Salt Lake, Sector - II,  
Karunamoyee, Kolkata-91  
E-mail : [director.cmdmp@gmail.com](mailto:director.cmdmp@gmail.com)  
Phone No.033-23596761, Fax No.-23344052

Memo No:-146-ES(CMDMP)/Genl-53/2012

Date: 06.04.2015

From : Shri N.N Barman  
Project Director (CMDMP)  
School Education Department

To : 1-5) District Magistrate Bankura / Purulia / Paschim Medinipur / North 24 Parganas / South 24 Parganas.

Sub : Guideline for Construction of dining hall in school under MDM Scheme.

Sir,

For construction of 979 dining halls in Jangle Mahal and Sundarban areas, the State Government has now released Rs. 2972.33 Lakh.

The following guidelines may be followed:

- a) The Grant will be used for construction of dining hall only. It will be constructed in such schools where construction of kitchen-cum-store, have been completed and used for cooking Mid-Day Meal.
- b) Dining hall should be adjacent to the kitchen-cum-store. It must always be kept clean.
- c) Dining hall is to be constructed as per Model Plan & estimate (copy enclosed). The per unit cost of dining hall has been fixed @ Rs. 2.69 lakh for primary schools and @ Rs. 4.92 lakh for upper primary schools.
- d) A separate and proper account of money received / provided and its utilization shall be maintained.
- e) A register of immovable property and such other records as prescribed in rules shall be maintained.
- f) Fund for construction of dining hall will be allotted to those schools where sufficient space is there for the said construction.
- g) The sub-allotment of fund will be completed to lower levels immediately on receipt of it. Construction of dining hall will be completed within six months after receipt of fund positively.

*Enclo : As Sated*

Yours faithfully,

  
Project Director  
CMDMP

**REVISED MODEL ESTIMATE FOR THE PROPOSED CONSTRUCTION OF DINING HALL IN UPPER  
PRIMARY SCHOOL MODEL-2 UPPER PRIMARY SCHOOL**

Item no	Description of item	Unit	Quantity	Rate	Amount
1	Earth work in excavation of foundation trenches or drains in all sorts of soil (including mixed soil but excluding laterite or sand stone) including removing spreading or stacking the spoils within a lead of 75 m. Depth of excavation not exceeding 1500 mm	%cum	11.38	9,221.30	1,049.38
2	Earth work in filling in foundation trenches or plinth with good earth in layers not exceeding 150 mm, including watering and ramming etc lyer by layer.	%cum	13.37	5,949.40	795.43
3	Supplying and laying brick khoa of ordinary bats of size (38mm x 63 mm) of approved quality in 100 mm layer (loose) filling in gaps with small ones rammed and compact true to level and grade.	sqm	172.00	197.40	33,952.80
4	Cement concrete with graded Jhama khoa ( 30 mm size) excuding shuttering (1:4:8)	cum	13.00	4,625.00	60,125.00
5	Cement concrete ( mix 1:1.5:3) with graded stone chips ( 20 mm nominal size) excluding shuttering and reinforcement as per relevant IS code	cum	4.80	5,959.00	28,603.20
6	Hire and Labour charges for shuttering with centering and necessary staggig up to 4 m using approved stout props and thick hard wood planks with required bracing for concrete slabs, beams and columns.	sqm	94.00	286.99	26,977.06
7	Reinforcement for reinforced concrete work in all sorts of structure including distribution bars, stirrups, binders initial straightening and removal of loose rust, cutting to requisite length				


Item no	Description of item	Unit	Quantity	Rate	Amount
	hooking and bending to correct shape placing in proper position and binding with 16 gauge black annealed wire.	mt	0.30	59,762.00	17,928.60
8	125 mm thick Brick work with 1st class bricks in cement mortar (4:1)	sqm	60.00	677.00	40,620.00
9	Supplying fitting fixing Steel Pipe (G.I) with all necessary accessories, Specials including cutting pipes, making thred fitting fixing etc complete in all respect including cost of all all necessary fittings as required, jointing materials and two coats of painting.				
	80 mm dia medium quality.	mtr	32.00	841.00	26,912.00
	50 mm dia medium quality	mtr	130.00	520.00	67,600.00
	40 mm dia medium quality	mtr	100.00	399.00	39,900.00
10	Supplying fitting fitting fixing Galvanised corrugated iron sheet work fitted and fixed with 10 mm dia J or L hook-bolts limpet and bitumen washer and putty complete. with 0.63 mm thick sheet	sqm	180.00	555.95	100,071.00
11	Supplying fitting fixing Galvanised iron sheet ridging fitted with necessary bolts screw washer 225 mm end lapping. 450 mm lapping each way. with 0.63 mm sheet.	mtr	16.00	405.95	6,495.20
12	Supplying fitting fixing Galvanised or painted Wind tie made of M.S flats fitted and fixed complete made with 50 mm x 6 mm flats.	mtr	18.00	131.94	2,374.92
13.	Artificial stone in floor, dado, staircase with cement concrete (1:2:4) with stone chips laid in panels with topping made with ordinary or white cement and marble dust in proportion (1:2) 35 mm thick	sqm	152.00	293.20	44,566.40

Item no	Description of item	Unit	Quantity	Rate	Amount
14	Plaster with sand and cement mortar including rounding off or chamfering corners and raking out joints including throating, nosing and drip course. With (1:4) cement mortar 15 mm thick Plaster	sqm	120.00	135.75	16,290.00
15	Neat cement punning about 1.5 mm thick in wall, dado, floor etc.	sqm	135.00	120.00	16,200.00

Total	530,461.00
Less Contractors Profit @ 10%	53,046.10
Total	477,414.90
Add contingency @ 3%	14,322.45
Total	491,737.35
Say	491,700.00

Rs Four lakh Ninety one thousand Seven hundred only.

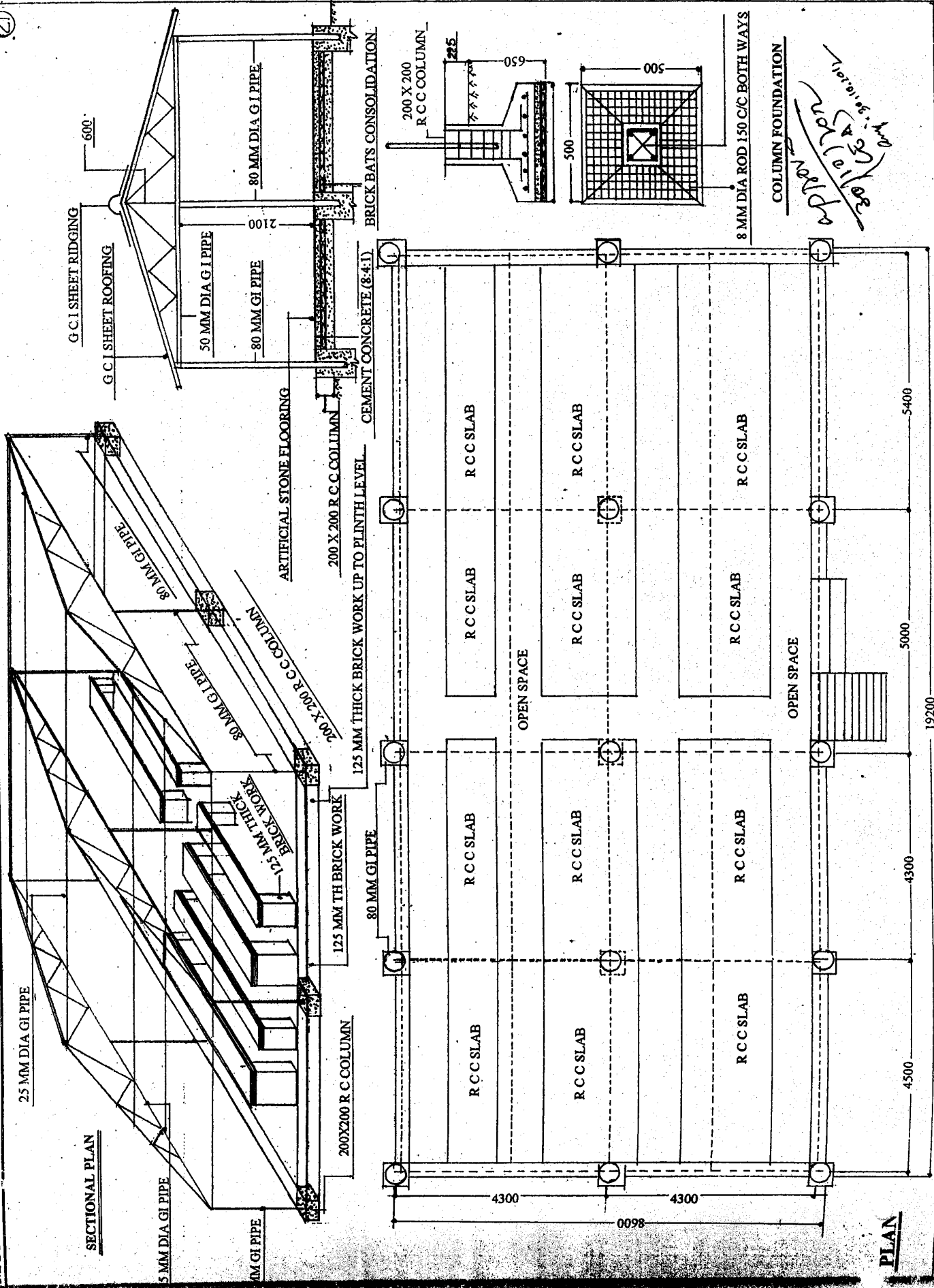
Rate as per PWD Schedule of rates 2010-11 with corrigendum effect from sept 2012

  
 Chief Engineering Advisor  
 School Education deptt  
 Govt of West Bengal  
*Am*

26/05/2014

Real?

**MODEL-2 M.P. DAY MEAL SHED UPPER PRIMARY SCHOOL FOR 200 STUDENT**



*Handwritten notes:*  
 1/10/11  
 10/10/11  
 10/10/11  
 10/10/11

**REVISED MODEL ESTIMATE FOR THE PROPOSED CONSTRUCTION OF DINING HALL IN  
PRIMARY SCHOOL MODEL-3 PRIMARY SCHOOL**

Item no	Description of item	Unit	Quantity	Rate	Amount
1	Earth work in excavation of foundation trenches or drains in all sorts of soil (including mixed soil but excluding laterite or sand stone) including removing spreading or stacking the spoils within a lead of 75 m. Depth of excavation not exceeding 1500 mm	%cum	6.00	9,221.30	553.28
2	Earth work in filling in foundation trenches or plinth with good earth in layers not exceeding 150 mm, including watering and ramming etc lyer by layer.	%cum	7.00	5,949.40	416.46
3	Supplying and laying brick khoa of ordinary bats of size (38mm x 63 mm) of approved quality in 100 mm layer (loose) filling in gaps with small ones rammed and compact true to level and grade.	sqm	90.00	197.40	17,766.00
4	Cement concrete with graded Jhama khoa ( 30 mm size) excuding shuttering (1:4:8)	cum	7.00	4,625.00	32,375.00
5	Cement concrete ( mix 1:1.5:3) with graded stone chips ( 20 mm nominal size) excluding shuttering and reinforcement as per relevant IS code	cum	2.00	5,959.00	11,918.00
6	Hire and Labour charges for shuttering with centering and necessary staggig up to 4 m using approved stout props and thick hard wood planks with required bracing for concrete slabs, beams and columns.	sqm	34.00	286.99	9,757.66
7	Reinforcement for reinforced concrete work in all sorts of structure including distribution bars, stirrups, binders initial straightening and removal of loose rust, cutting to requisite length				


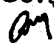
Item no	Description of item	Unit	Quantity	Rate	Amount
	hooking and bending to correct shape placing in proper position and binding with 16 gauge black annealed wire.	m.t	0.15	59,762.00	8,964.30
8	125 mm thick Brick work with 1st class bricks in cement mortar (4:1)	sqm	33.00	677.00	22,341.00
9	Supplying fitting fixing Steel Pipe (G.I) with all necessary accessories, Specials including cutting pipes, making thred fitting fixing etc complete in all respect including cost of all all necessary fittings as required, jointing materials and two coats of painting.				
	80 mm dia medium quality.	mtr	25.20	841.00	21,193.20
	50 mm dia medium quality	mtr	94.00	520.00	48,880.00
	40 mm dia medium quality	mtr	52.50	399.00	20,947.50
10	Supplying fitting fitting fixing Galvanised corrugated iron sheet work fitted and fixed with 10 mm dia J or L hook-bolts limpet and bitumen washer and putty complete. with 0.63 mm thick sheet	sqm	94.00	555.95	52,259.30
11	Supplying fitting fixing Galvanised iron sheet ridging fitted with necessary bolts screw washer 225 mm end lapping. 450 mm lapping each way. with 0.63 mm sheet.	mtr	11.00	405.95	4,465.45
12	Supplying fitting fixing Galvanised or painted Wind tie made of M.S flats fitted and fixed complete made with 50 mm x 6 mm flats.	mtr	22.00	131.94	2,902.68
13	Artificial stone in floor, dado, staircase with cement concrete (1:2:4) with stone chips laid in panels with topping made with ordinary or white cement and marble dust in proportion (1:2) 35 mm thick	sqm	78.00	293.20	22,869.60

Item no	Description of item	Unit	Quantity	Rate	Amount
14	Plaster with sand and cement mortar including rounding off or chamfering corners and raking out joints including throating, nosing and drip course. With (1:4) cement mortar 15 mm thick Plaster	sqm	75.00	135.75	10,181.25
15	Neat cement punning about 1.5 mm thick in wall, dado, floor etc.	sqm	70.00	31.36	2,195.20

Total	289,985.88
Less Contractors Profit @ 10%	28,998.59
Total	260,987.29
Add contingency @ 3%	7,829.62
Total	268,816.91
Say	268,800.00

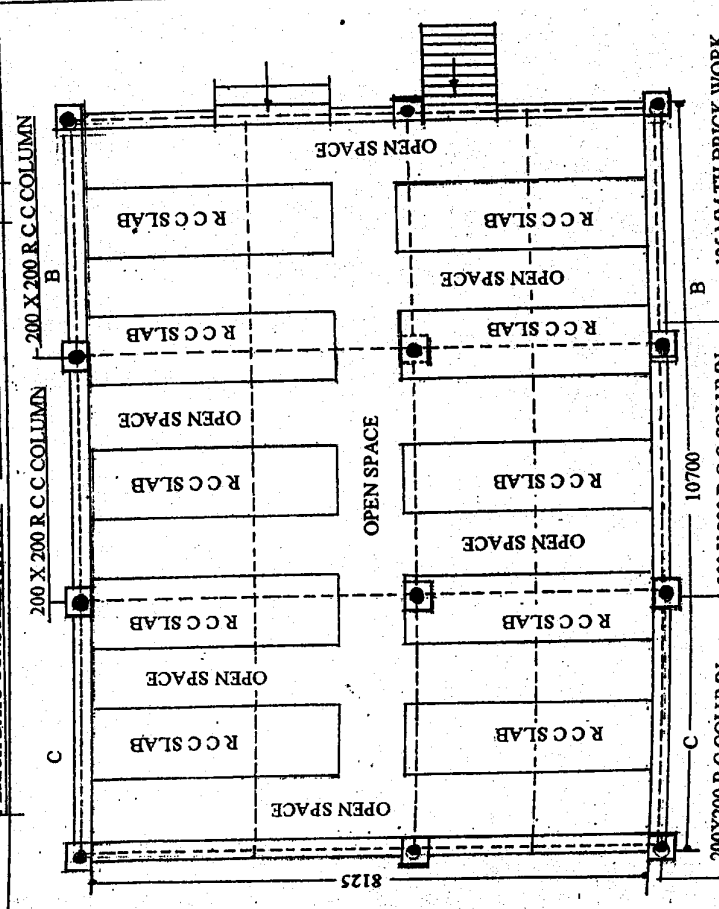
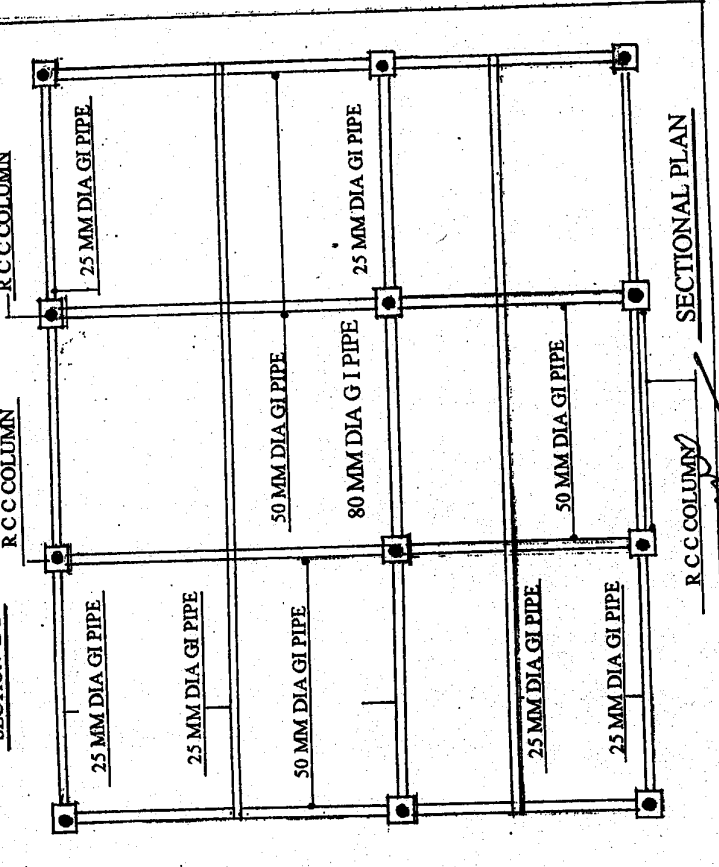
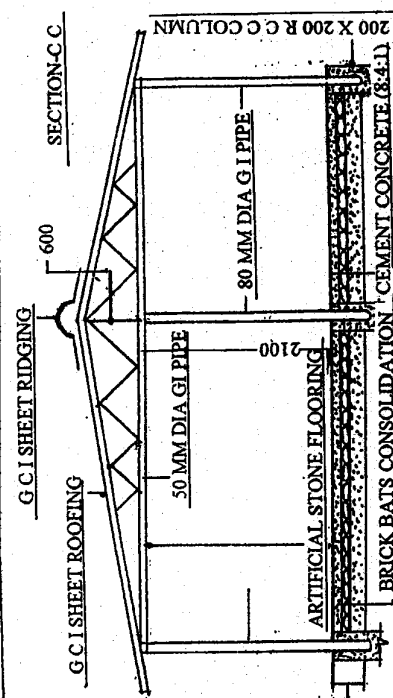
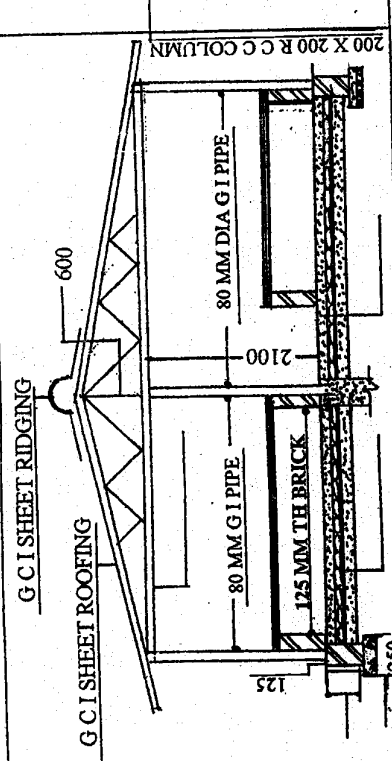
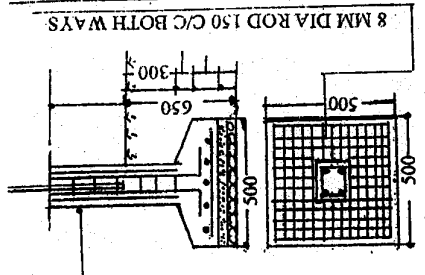
Rs Two lakh Sixty eight thousand Eight hundred only.

Rate as per PWD Schedule of rates 2010-11 with corrigendum effect from sept 2012

  
26/05/2014  
 Chief Engineering Advisor  
 School Education deptt  
 Govt of West Bengal  




MODEL-3 MID DAY MEAL SHED PRIMARY SCHOOL FOR 100 STUDENTS



COVERED AREA - 86.93 SQM

*Handwritten signature and date: 02/10/2012 (36A)*

PLAN